

piano 2

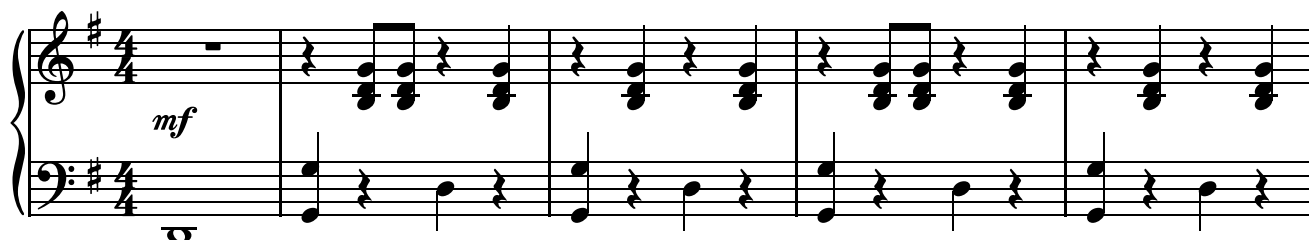
# A Page of My Story ~Four-Handed ver.~

高橋諒「Takahashi Ryou」

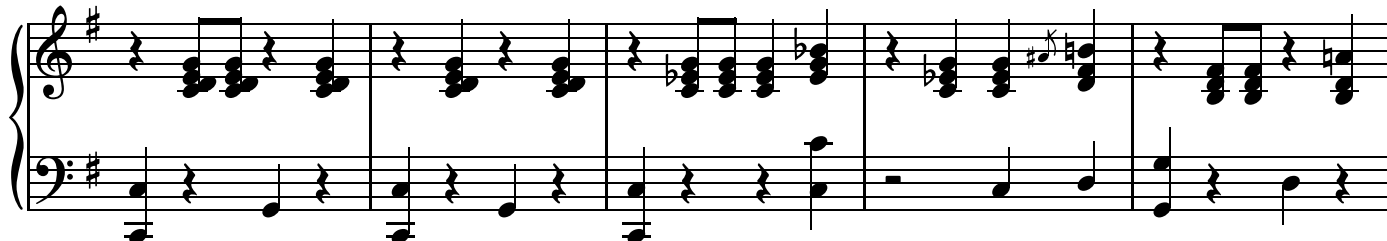
arranged by Ron "duVillage" van Dorp

## プリンセス・プリンシパル「Princess Principal」

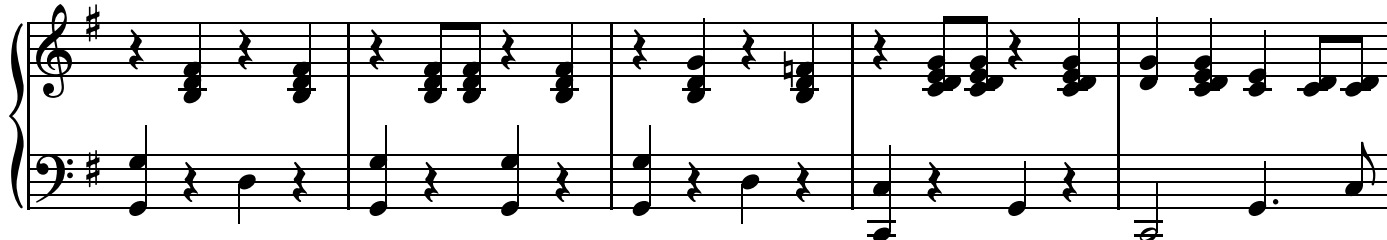
♩ = 181



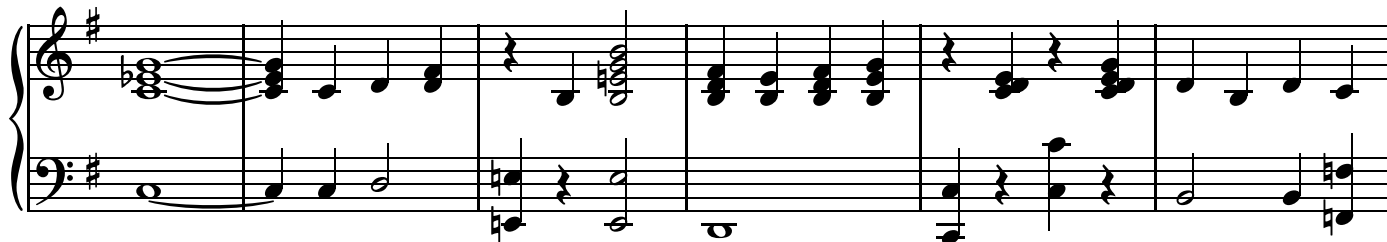
6



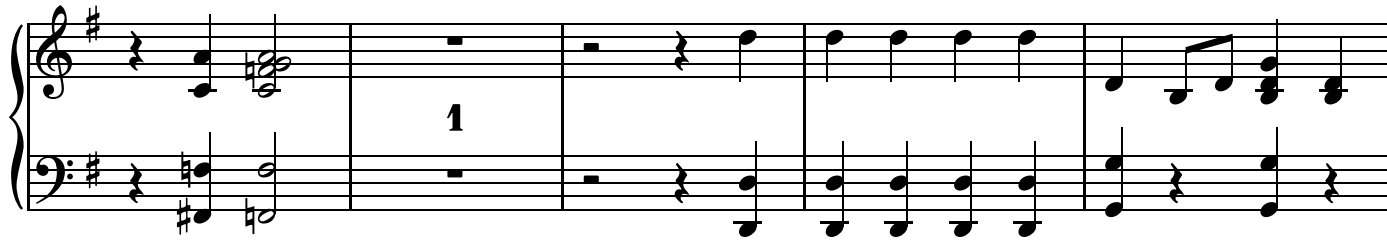
11



16



22



27

Measures 27-31 of the piano 2 part. The key signature is one sharp (F#). The music features a steady eighth-note accompaniment in the right hand and a more active bass line in the left hand, primarily consisting of eighth and sixteenth notes.

32

Measures 32-36 of the piano 2 part. The accompaniment continues with eighth notes in the right hand and a mix of eighth and sixteenth notes in the left hand.

37

Measures 37-41 of the piano 2 part. Measures 37-39 continue the previous texture. In measure 40, the right hand has a whole note chord, and in measure 41, it has a half note chord. The left hand continues with eighth notes.

42

Measures 42-46 of the piano 2 part. Measure 42 begins with a *mp* (mezzo-piano) dynamic marking. Measures 43-45 show a more active right hand with eighth-note patterns. Measure 46 features a whole rest in the right hand and a whole note chord in the left hand. A large black bar is present in the right hand staff for measures 42-46, and the number '4' is written in the left hand staff.

50

Measures 50-54 of the piano 2 part. Measure 50 begins with a *mp* dynamic marking. Measures 50-53 feature a dense texture with eighth-note chords in the right hand and a simple bass line in the left hand. Measure 54 concludes the section with a whole rest in the right hand and a whole note chord in the left hand. A large black bar is present in the right hand staff for measures 50-54, and the number '4' is written in the left hand staff.